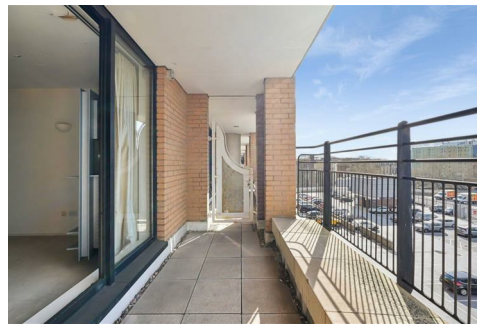


MATTHEW JAMES

Residential Sales • Lettings • Management



Cromwell Road, Kensington, SW7 4XD

Asking Price £325,000

A spacious one bedroom flat requiring redecoration situated on the fourth floor of a large 24hr portered building in the heart of South Kensington. The property is presented in good condition throughout with 656sq.ft. of accommodation and offers a large, bright reception room, separate kitchen, one large, bright double bedroom, bathroom and large terrace. Available chain free. EWS1 Compliant.

Fourth Floor

Lift and stair access.

Entrance Hall

Carpet, large storage cupboard.

Lounge



Carpet, double glazed doors to terrace.

Kitchen



Fitted wall and base units, work surface incorporating stainless steel sink and drainer unit, eye level electric oven with microwave oven below, electric hob, spaces for washing machine and fridge freezer.

Double Bedroom



Carpet, double glazed windows.

Bathroom



Panel enclosed bath with mixer tap and fixed shower overhead, wash basin, low flush WC, tiled walls and floor, medicine cabinet, fitted mirror.

Additional Information

Service Charge £7,692.64 per annum subject to review

Ground Rent £800 per annum

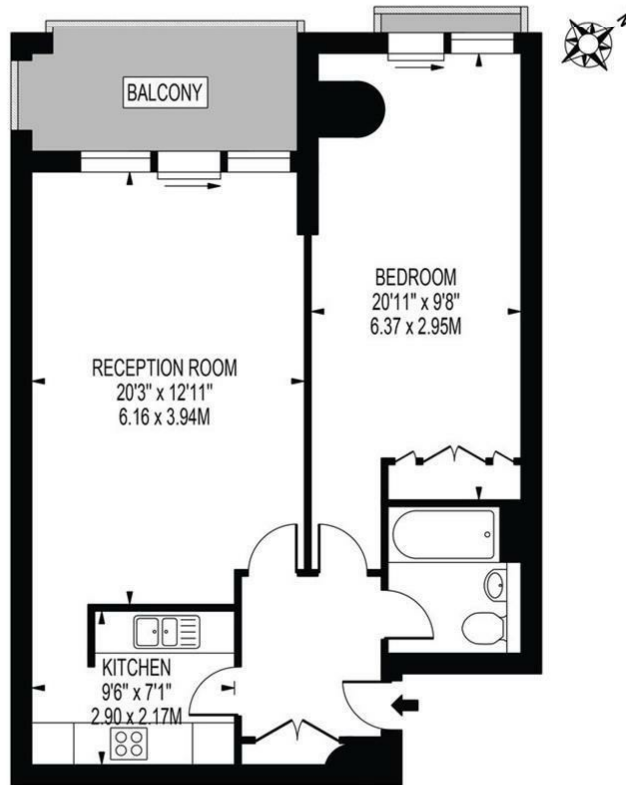
EPC Rating C

Chain Free

Floor Plan

POINT WEST

APPROXIMATE GROSS INTERNAL FLOOR AREA: 656 SQ FT - 60.97 SQ M

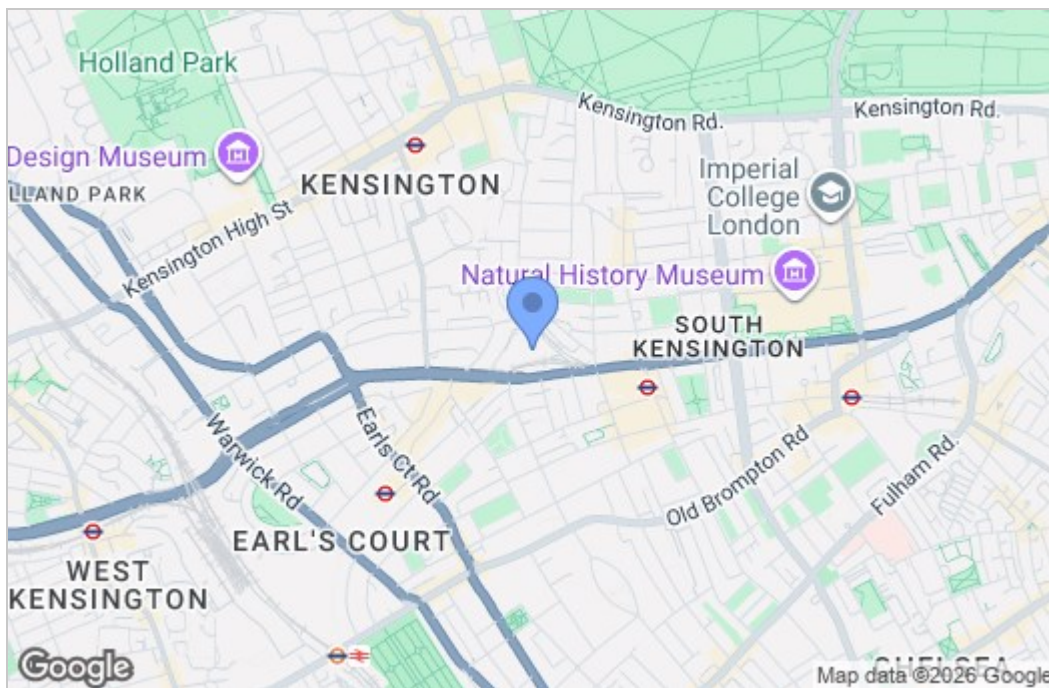


FOURTH FLOOR

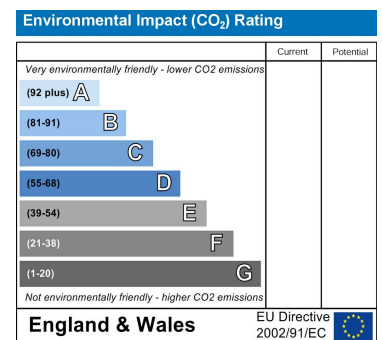
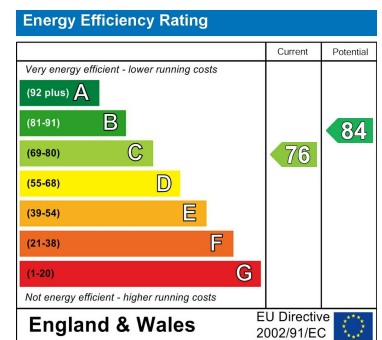
FOR ILLUSTRATION PURPOSES ONLY

THIS FLOOR PLAN SHOULD BE USED AS A GENERAL OUTLINE FOR GUIDANCE ONLY AND DOES NOT CONSTITUTE IN WHOLE OR IN PART AN OFFER OR CONTRACT. ANY INTENDING PURCHASER OR LESSEE SHOULD SATISFY THEMSELVES BY INSPECTION, SEARCHES, ENQUIRIES AND FULL SURVEYS AS TO THE CORRECTNESS OF EACH STATEMENT. ANY AREAS, MEASUREMENTS OR DISTANCES QUOTED ARE APPROXIMATE AND SHOULD NOT BE USED TO VALUE A PROPERTY OR BE THE BASIS OF ANY SALE OR LET.

Area Map



Energy Efficiency Graph



These particulars, whilst believed to be accurate are set out as a general outline only for guidance and do not constitute any part of an offer or contract. Intending purchasers should not rely on them as statements of representation of fact, but must satisfy themselves by inspection or otherwise as to their accuracy. No person in this firm's employment has the authority to make or give any representation or warranty in respect of the property.

43- 45 Fortess Road, Kentish Town, London, NW5 1AD

Tel: 020 7284 4343 Email: als@matthewjames.co.uk www.matthewjames.co.uk